

PRODUCT OVERVIEW

VALVE CONTROLLER (VC)

Price's Valve Controller is designed for valve control solutions to provide precision valve control in operating rooms and critical patient care spaces. This valve mounted controller includes full reheat control and the convenience of native BACnet communication.

The VC is designed to accurately monitor and control the supply or return/exhaust valve in a VAV system. A supply valve being controlled with a VC is easily able to modulate ventilation, temperature or occupancy requirements.

Flow feedback input options allow the VC valve controller to be used with a Price venturi valves or single duct terminal unit, maximizing valve selection flexibility for system designers.



Product Features

VC:

- Optional Native BACnet MS/TP interface
- Adjustment of sequence parameters, settings, and balancing are possible from the password-protected service menu of LCD thermostats
- Service port on all thermostat models provides a computer interface for setup/balancing when LCD thermostat is not available/sufficient
- Fast/error proof RJ-45 thermostat connections
- Reheat

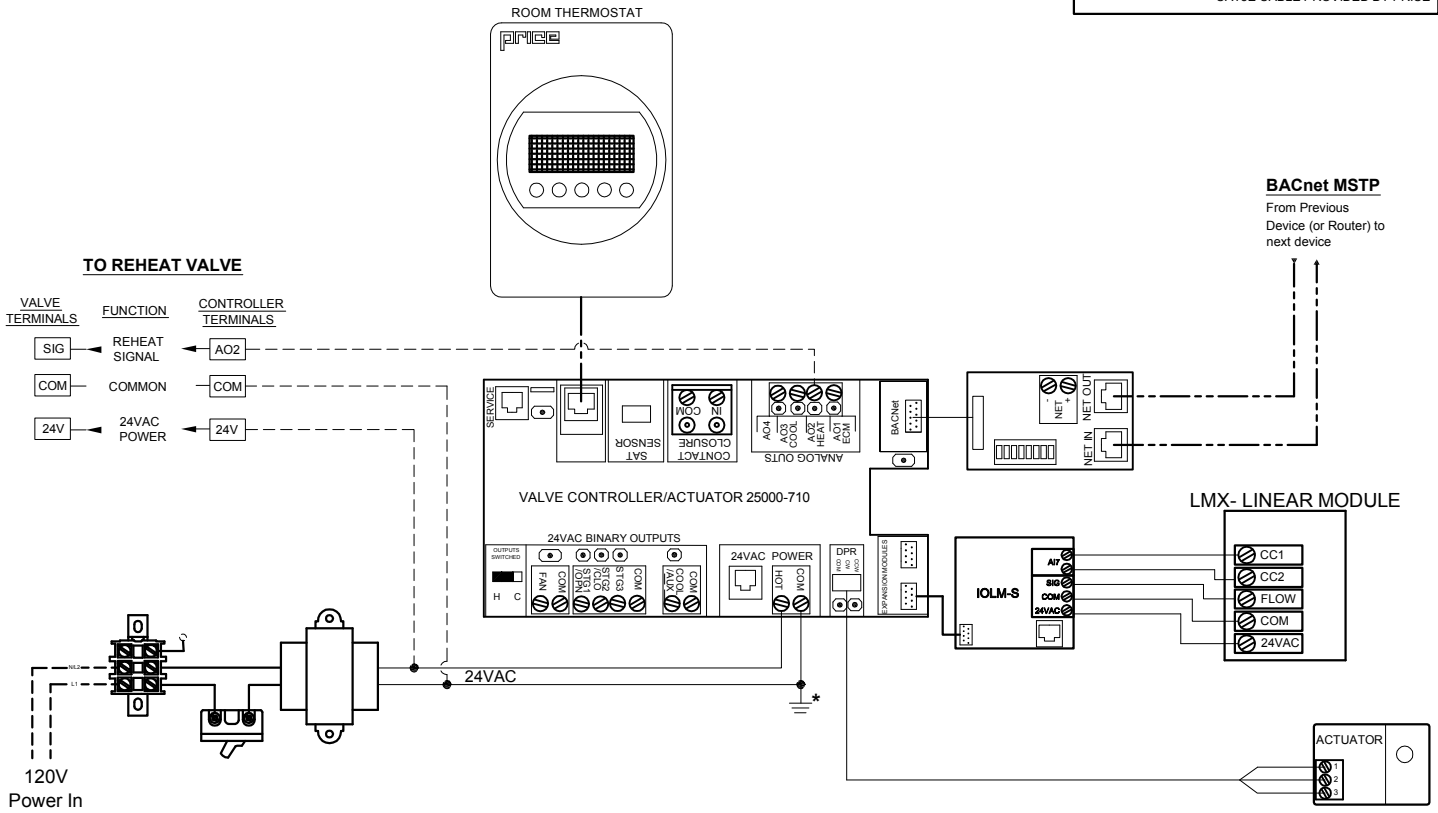
SPECIFICATIONS

- Input Power:** 24 VAC, 50/60 Hz, 5VA (plus external actuator/reheat loads), Class 2
- Environmental (operating):** 0 C to 50 C (32 F to 122 F), 0% to 95% R.H. (non-condensing)
- Environmental (storage):** -30 C to 50 C (-22 F to 122 F), 0% to 95% R.H. (non-condensing)
- Inputs:** (2) thermistor (t-stat, duct probe), (1) binary input (contact closure)
- Airflow Inputs:** (1) analog input for LM or (1) VAV module for airflow sensor (Depending on configuration)
- Outputs:** (4) analog (0-10 VDC) short circuit protected, (10 mA maximum)
(9) binary outputs (24 VAC) – Fan, Heat 1,2,3, Cooling, actuator
- Thermostat:** Multiple options: LCD (full Balance functions), Dial, Motion, or CO₂/Humidity
- Communication:** Optional Native BACnet MS/TP interface. (Baud: 9600, 19,200, 38,400, or 76,800)
- Actuator:** (1) floating point actuator (24 VAC, 2VA) – included
- Indicators:** LED's for analog and binary outputs, Status and Net Health
- Connections:** Pluggable terminal blocks, RJ45 (T-Stat, BACnet), RJ12 (Service)

Specifications subject to change without notice

TYPICAL WIRING

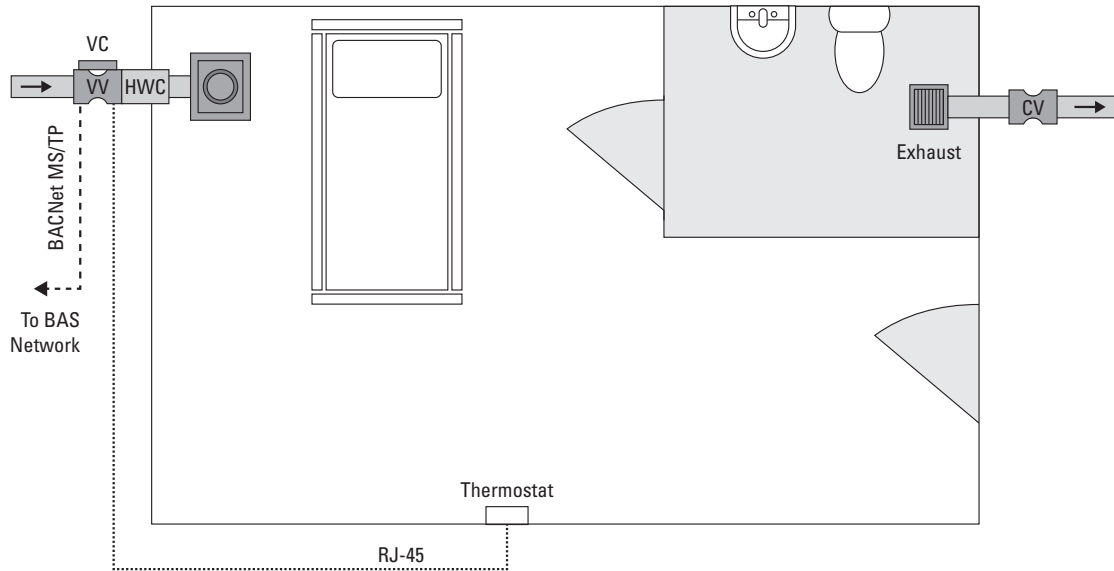
LEGEND	
	FACTORY ELECTRICAL WIRING
	FIELD ELECTRICAL WIRING
	CAT5E CABLE PROVIDED BY PRICE



Please contact your Price representative for more information on the use of a third-party thermostat.

TYPICAL APPLICATION

VC – Volumetric Offset Control



SELECTION CHART

	PM Room Pressure Monitor	PMX Room Pressure Monitor Deluxe	PMT Room Pressure Monitor Touchscreen	PC Room Pressure Controller	TC Tracking Controller	VC Valve Controller
Direct Pressure Control				X		
Dynamic Pressure Control				X		
Volumetric Offset Control				X	X	
Temperature Control				X	X	X
Humidity Control				X		
Pressure Monitor	X	X	X	X		
Secondary Room Support		X		X		
BACnet Communication		X	X	X	X	X
Analog Pressure Output		X	X	X		
Remote Station Interface		X		X		
Door Switch Input		X	X	X		
Keyswitch Interface		X	X	X		
Touchscreen Display			X			

PRODUCT CODE

VC-LM-BAC-LCD

Product	Supply Flow Feedback Type	Network Type	Thermostat Type
VC - Valve Controller	LM - Electronic Flow Feedback Supply Valve LMX - Electronic Flow Feedback with Pressure Alarm Supply Valve SP300 - Airflow Feedback with SP300 Sensor Supply Valve SSS - Airflow Feedback with Stainless Sensor Supply Valve	BAC - Native BACnet MS/TP Network	SENS - T-Stat with Blank Face DIAL - T-Stat with Dial Setpoint Adjust LCD - T-Stat with LCD Screen LCDH - T-Stat with LCD Screen and Integrated Humidity Sensor MOT - T-Stat with LCD Screen and Motion Sensor CO₂H - T-Stat with LCD Screen and Integrated CO ₂ and Humidity Sensors